

CONTACT INFORMATION

- Website: www.supermicro.com
- General Information: marketing@supermicro.com
- Technical Support: support@supermicro.com
- Phone: +1 (408) 503-8000, Fax: +1 (408) 503-8008

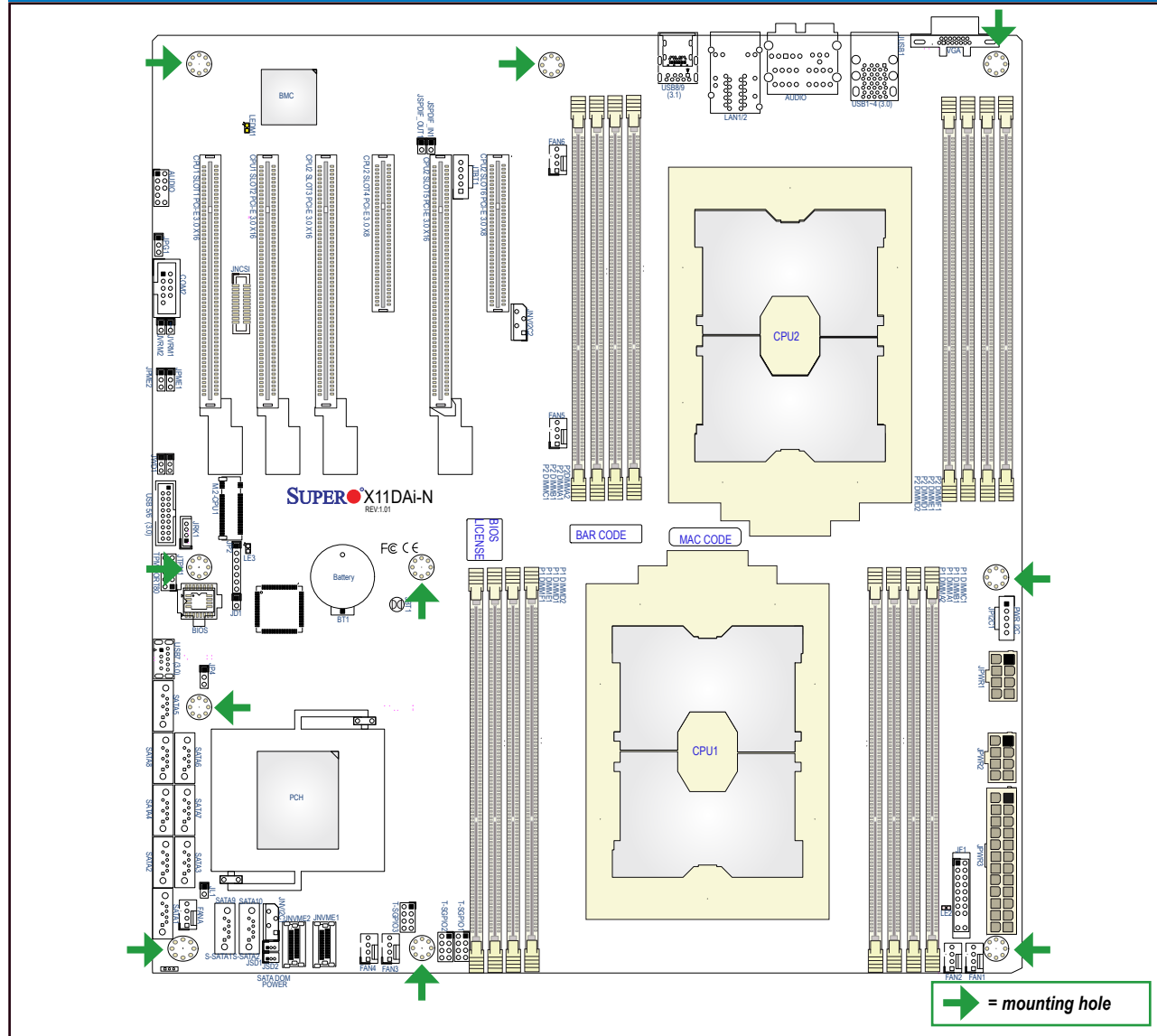
FOR YOUR SYSTEM TO WORK PROPERLY, PLEASE DOWNLOAD APPROPRIATE

- DRIVERS/IMAGES/USER'S MANUAL FROM THE LINKS BELOW:**
- Manuals: <http://www.supermicro.com/support/manuals>
 - Drivers & Utilities: <ftp://ftp.supermicro.com>
 - Safety: http://www.supermicro.com/about/policies/safety_information.cfm

PACKAGE CONTENTS

- One (1) Supermicro Motherboard
- Six (6) SATA Cables
- One (1) I/O Shield
- One (1) Quick Reference Guide (MNL-1957-QRG)

Motherboard Layout and Features



Jumpers, Connectors and LED Indicators

Jumpers		
Jumper	Description	Default Setting
JBT1	CMOS Clear	Open (Normal)
JPG1	VGA Enable	Pins 1-2 (Enabled)
JPME1	ME Recovery	Pins 1-2 (Normal)
JPME2	Manufacturing (ME) Mode Select	Pins 1-2 (Normal)
JVRM1	VRM SMB Clock (to BMC or PCH)	Pins 1-2 (BMC, Normal)
JVRM2	VRM SMB Data (to BMC or PCH)	Pins 1-2 (BMC, Normal)
JWD1	Watch Dog Timer Enable	Pins 1-2 (Normal)

Connectors

Connectors	Description
Audio (JA1)	Audio connector for front access
Audio (JAUDIO1)	Audio port on the I/O back panel
BT1	Onboard CMOS battery
COM2 (JCOM2)	COM/Serial Port header for front access
Fan1~6, FANA	System cooling fan headers
JD1	Internal speaker/buzzer
JTBT1	Thunderbolt header
JF1	Front control panel header
JIPMB1	4-pin external BMC I ² C header (for an IPMI card)
JL1	Chassis Intrusion header
JNCSI	NCSI header
JNV ² PC1/JNV ² PC2	NVMe SMBus (I ² C) headers used for PCI-E hot-plug SMBus clock & data connections (an SMCI-proprietary NVMe add-on card and cable are required; available for a Supermicro complete system only)
JNVME1/2	NVMe slots 1/2
JP2	Complex-Programmable Logical Device (CPLD) header
JP4	5V/5V AUX switch
JSD1/JSD2	SATA DOM (Disk-on-Mobile) power connectors 1/2
JPP ² C1	Power Supply SMBus I ² C header
JPWR1/JPWR2	12V 8-pin power supply connectors
JPWR3	24-pin ATX main power supply connector
JRK1	RAID Key for onboard SATA devices
JSPDIF_In/JSPDIF_Out	SPDIF (Sony/Philips Digital Interconnect Format) Audio In/Out connectors
JTPM1	Trusted Platform Module (TPM)/Port 80 connector
LAN1/LAN2	Gigabit LAN (GLAN) Ethernet ports on the back panel
M.2-CPU1	M.2 Slot supported by CPU1
SATA1~4, 5~8	SATA 3.0 connection headers supported by the Intel PCH
S-SATA1/2 (SuperDOM)	S-SATA 3.0 connectors with built-in power pins and support of Supermicro SuperDOM (Disk-on-Module) devices
(CPU1) Slot1/Slot2	PCI-Express 3.0 X16 slots supported by CPU1
(CPU2) Slot3/Slot5	PCI-Express 3.0 X16 slots supported by CPU2
(CPU2) Slot4/Slot6	PCI-Express 3.0 X8 slots supported by CPU2
T-SGPIO31/2/3	Serial General Purpose I/O ports 1/2/3 (T-SGPIO1: SATA1~4, T-SGPIO2: SATA5~8, T-SGPIO3: S-SATA1/2)
USB1/2/3/4 (3.0)	Backpanel USB 3.0 ports 1/2/3/4
USB7 (3.0)	Front Accessible USB 3.0 Type A connector (USB 7)
USB5/6 (3.0)	USB 3.0 connections 5/6 for front access
USB8/9 (3.1)	Backpanel USB 3.1 ports 8/9

LED Indicators

LED	Description	State	Status
LE2	Onboard Power LED	On	Onboard Power On
LE3	M.2 LED	Blinking Green	Device Working
LEDM1	BMC Heartbeat LED	Blinking Green	BMC Normal

CPU Support

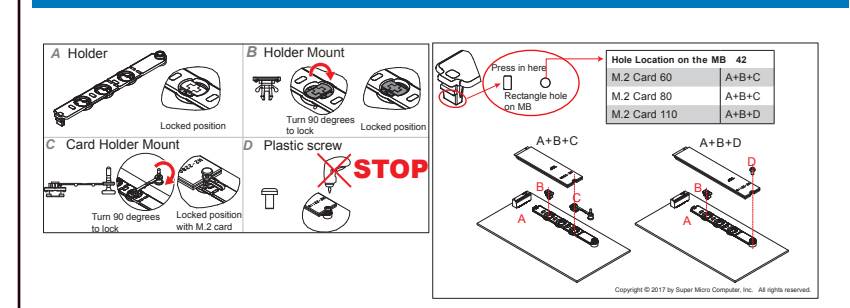
Dual Intel® Xeon 81xx/61xx/51xx/41xx/31xx Series processors (Socket P0); each processor supports dual full-width Intel UltraPath Interconnect (UPI) links of up to 10.4 GT/s one direction per UPI.

Memory Support

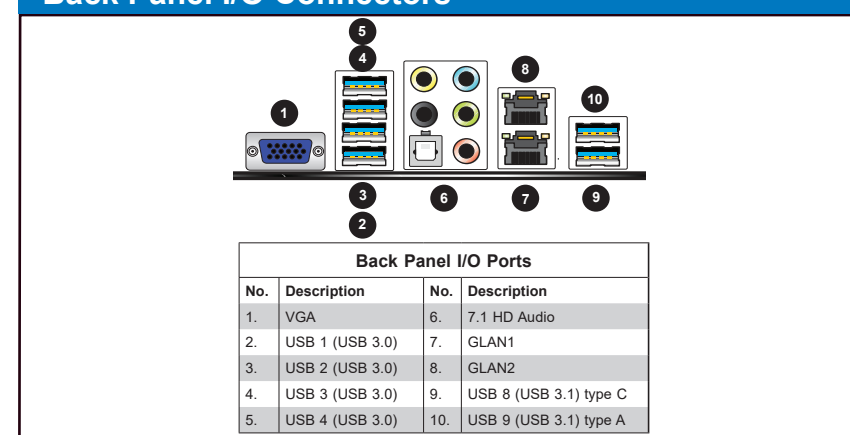
The X11DAI-N motherboard supports up to 2048GB of 3DS RDIMM/3DS LRDIMM/LRDIMM/RDIMM DDR4 ECC 2666/2400/2133 MHz memory in 16 memory slots. Please refer to the table below for memory population instructions.

DDR4 Memory Support (for 2-Slot Per-Channel Configuration)						
Type	Ranks Per DIMM and Data Width	DIMM Capacity (GB)	Speed (MT/s); Voltage (V); Slots per Channel (SPC) and DIMMs per Channel (DPC)			
			2 Slots per Channel		2 Slots per Channel	
			1DPC (1-DIMM per Channel)		2DPC (2-DIMM per Channel)	
RDIMM	SRx4	8 GB	16 GB	1.2 V	2666	2666
RDIMM	SRx8	4 GB	8 GB	1.2 V	2666	2666
RDIMM	DRx8	8 GB	16 GB	1.2 V	2666	2666
RDIMM	DRx4	16 GB	32 GB	1.2 V	2666	2666
RDIMM 3DS	QRx4	N/A	2H-64GB	1.2 V	2666	2666
RDIMM 3DS	8Rx4	N/A	4H-128GB	1.2 V	2666	2666
LRDIMM	QRx4	32 GB	64 GB	1.2 V	2666	2666
LRDIMM 3DS	QRx4	N/A	2H-64GB	1.2 V	2666	2666
LRDIMM 3DS	8Rx4	N/A	4H-128 GB	1.2 V	2666	2666

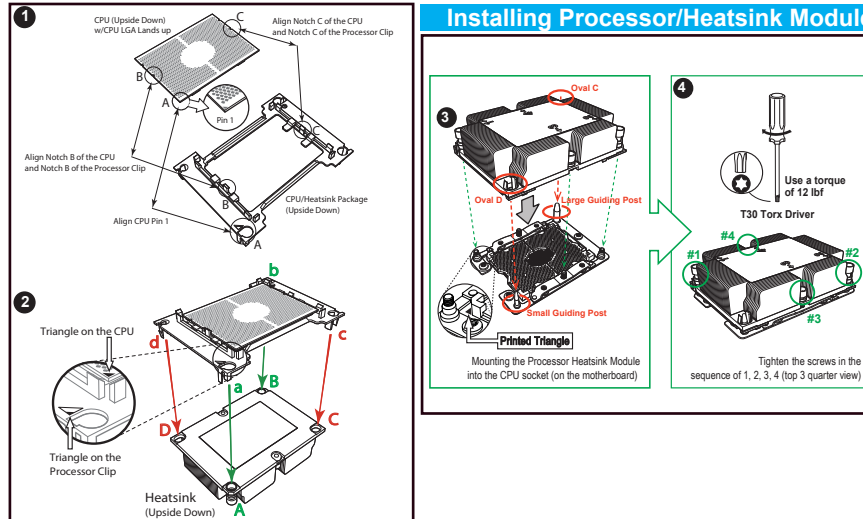
PCI-E M.2 Slot Installation



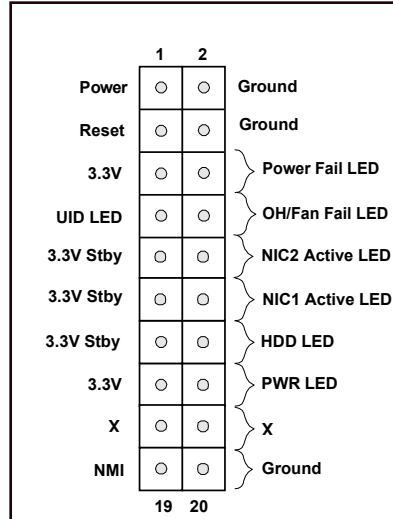
Back Panel I/O Connectors



CPU/Heatsink Installation



Front Panel Control (JF1)



Note: Graphics shown in this quick reference guide are for illustration only. Your components may or may not look exactly the same as drawings shown in this guide.

Note: Refer to Chapter 1 of the User Manual for detailed information on jumpers, connectors, and LED indicators.

Note: Refer to Chapter 2 of the User Manual for detailed information on memory support and CPU/motherboard installation instructions.