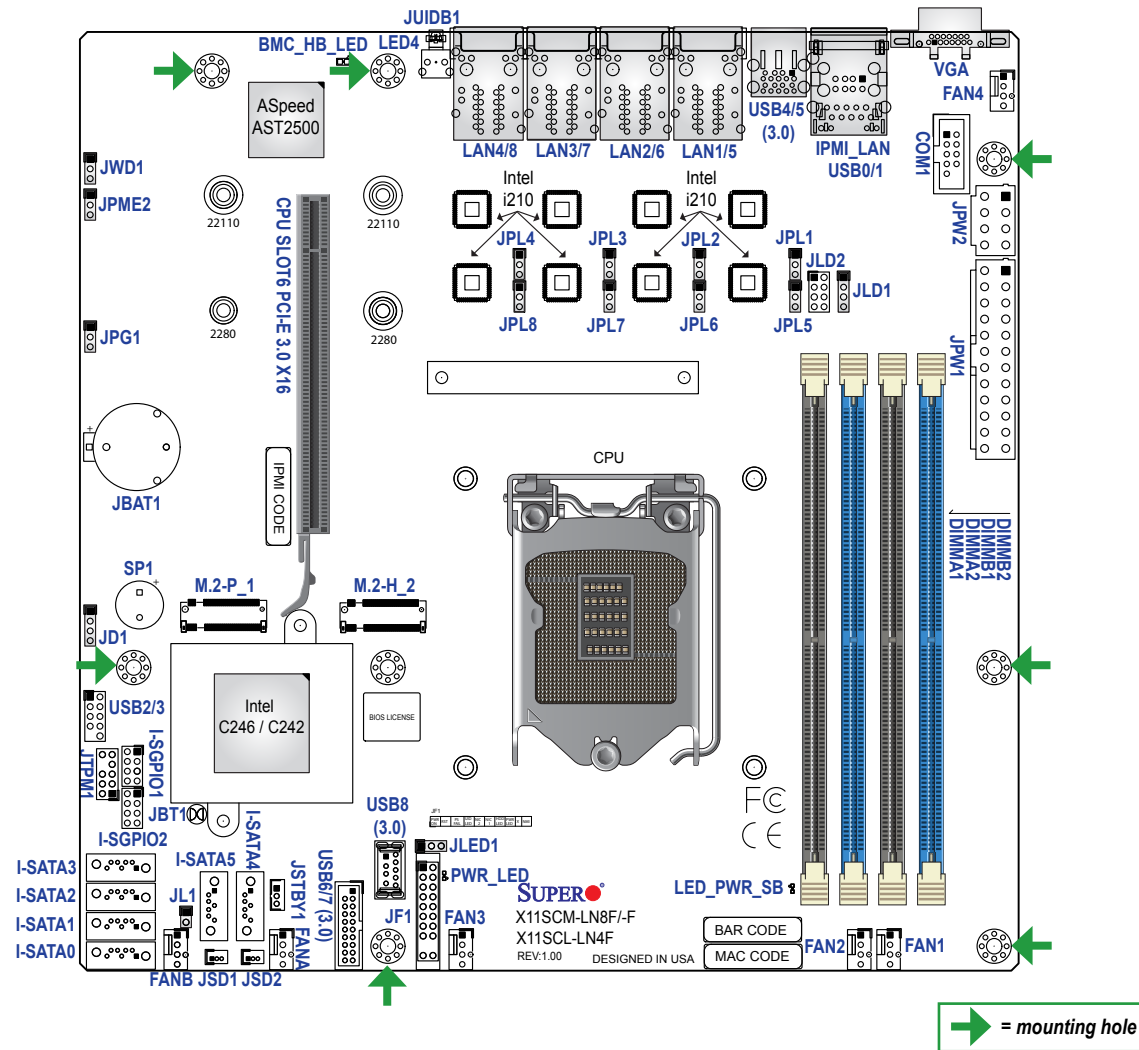


Motherboard Layout and Features



Connectors, Jumpers, and LED Indicators

Connectors	
Connector	Description
COM1	COM Header
FAN1 ~ FAN4	CPU/System Fan Headers
FANA, FANB	
IPMI_LAN	Dedicated IPMI LAN Port
I-SATA0 ~ I-SATA5	Intel® PCH SATA 3.0 Ports (with RAID 0, 1, 5, 10) I-SATA4 and I-SATA5 supports SuperDOM
I-SGPIO1, I-SGPIO2	Serial Link General Purpose I/O Headers
JBAT1	Onboard Battery
JD1	Speaker Header (Pins 1-4: Speaker; Pins 3-4: Onboard Buzzer)
JF1	Front Control Panel Header
JL1	Chassis Intrusion Header
JLED1	Onboard Power LED Header
JLD1	LAN3 ~ LAN4 Activity LED Connector
JLD2	LAN5 ~ LAN8 Activity LED Connector
JPW1	24-pin ATX Power Supply Connector
JPW2	8-pin Power Connector
JSD1, JSD2	SATA DOM Power Connectors
JSTBY1	Standby Power Header
JTPM1	Trusted Platform Module (TPM)/Port 80 Connector
JUIDB1	Unit Identifier (UID) Switch
LAN1 ~ LAN8	1GbE LAN Ports X11SCM-LN8F: LAN1 ~ LAN8 X11SCM-F: LAN1 ~ LAN2 X11SCL-LN4F: LAN1 ~ LAN4
M.2-H_2	M.2 Slot for PCI-E 3.0 x4 or SATA 3.0 x1 **X11SCM-LN8F-F supports both; X11SCL-LN4F supports PCI-E 3.0 (Supports M-Key 2280 / 22110 and Intel Optane Memory)
M.2-P_1	M.2 Slot for PCI-E 3.0 x4 (X11SCM-LN8F-F Only) (Supports M-Key 2280 / 22110 and Intel Optane Memory)
SLOT6	CPU PCI-E 3.0 x16 Slot
SP1	Onboard Buzzer
USB0/1	Back Panel Universal Serial Bus (USB) 2.0 Ports
USB2/3	Front Accessible USB 2.0 Header
USB4/5	Back Panel USB 3.1 Gen 1 Ports
USB6/7	Front Accessible USB 3.1 Gen 1 Header
USB8	USB 3.1 Gen 1 Type-A Header
VGA	VGA Port

Jumpers		
Jumper	Description	Default
JBT1	CMOS Clear	Open (Normal)
JPG1	VGA Enable	Pins 1-2 (Enabled)
JPL1 ~ JPL8	GLAN Enable	Pins 1-2 (Enabled)
JPME2	ME Manufacturing Mode	Pins 1-2 (Normal)
JWD1	Watchdog Timer	Pins 1-2 (Reset)

LED Indicators		
LED	Description	Status
BMC_HB_LED	BMC Heartbeat LED	Blinking Green: BMC Normal
LED4	Unit Identifier (UID) LED	Solid Blue: Unit Identified
LED_PWR_SB	Standby Power LED	Solid Green: Power Supply On
PWR_LED	Onboard Power LED	Solid Green: System On

CPU Support

The X11SCM-LN8F-F and X11SCL-LN4F supports an Intel Xeon E-2100, 8th Generation Core i3, Pentium, and Celeron (Socket H4 - LGA 1151) series processor with a thermal design power (TDP) of up to 95W and six cores.

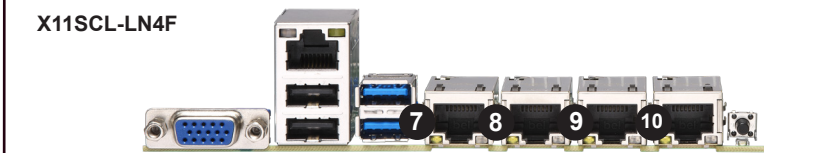
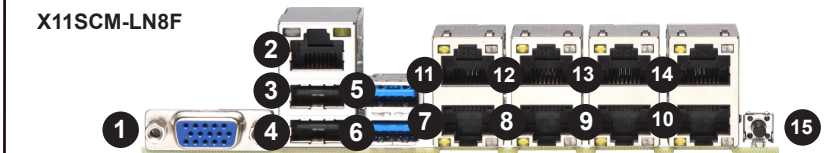
Memory Support and Installation

The X11SCM-LN8F-F and X11SCL-LN4F supports up to 64GB of unbuffered (UDIMM) DDR4 (288-pin) ECC memory (2-DIMM per channel) with speeds of up to 2666MHz in four memory slots. See below for additional memory information.

- The blue slots must be populated first.
- Always use DDR4 memory of the same type, size, and speed. Mixed DIMM speeds can be installed. However, all DIMMs will run at the speed of the slowest DIMM.
- The motherboard will support odd-numbered modules. However, to achieve the best memory performance, a balanced memory population is recommended.

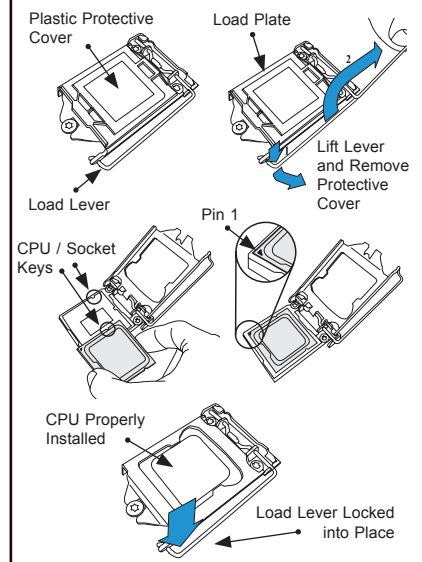
1 CPU, 4-DIMM Slots	
Number of DIMMs	Memory Population Sequence
1	DIMMB2
2	DIMMB2 / DIMMA2
3 (Unbalanced: Not Recommended)	DIMMB2 / DIMMA2 / DIMMB1
4	DIMMB2 / DIMMA2 / DIMMB1 / DIMMA1

Back Panel I/O Connectors

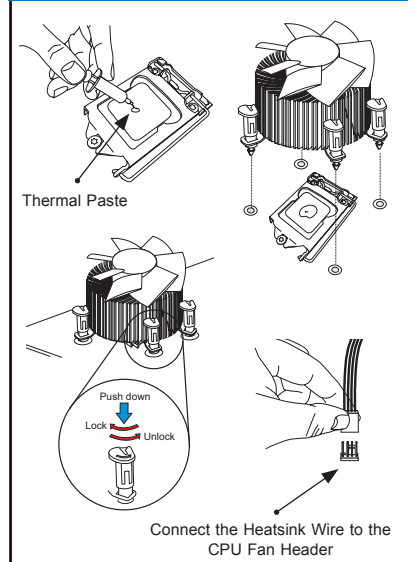


#	Description	#	Description	#	Description
1	VGA Port	6	USB4 (USB 3.1 Gen 1)	11	LAN5
2	Dedicated IPMI LAN	7	LAN1	12	LAN6
3	USB1	8	LAN2	13	LAN7
4	USB0	9	LAN3	14	LAN8
5	USB5 (USB 3.1 Gen 1)	10	LAN4	15	UID Switch and UID LED

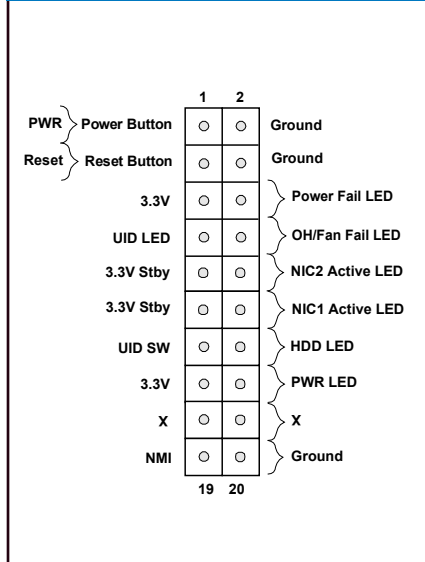
CPU Installation



Heatsink Installation



Front Control Panel (JF1)



Note: Graphics shown in this quick reference guide are for illustration only. Your components may or may not look exactly the same as drawings shown in this guide.

Note: Refer to Chapter 1 of the User Manual for detailed information on jumpers, connectors, and LED indicators.

Note: Refer to Chapter 2 of the User Manual for detailed information on memory support and CPU/motherboard installation instructions.