

CONTACT INFORMATION

- Website: www.supermicro.com
- General Information: marketing@supermicro.com
- Technical Support: support@supermicro.com
- Phone: +1 (408) 503-8000, Fax: +1 (408) 503-8008

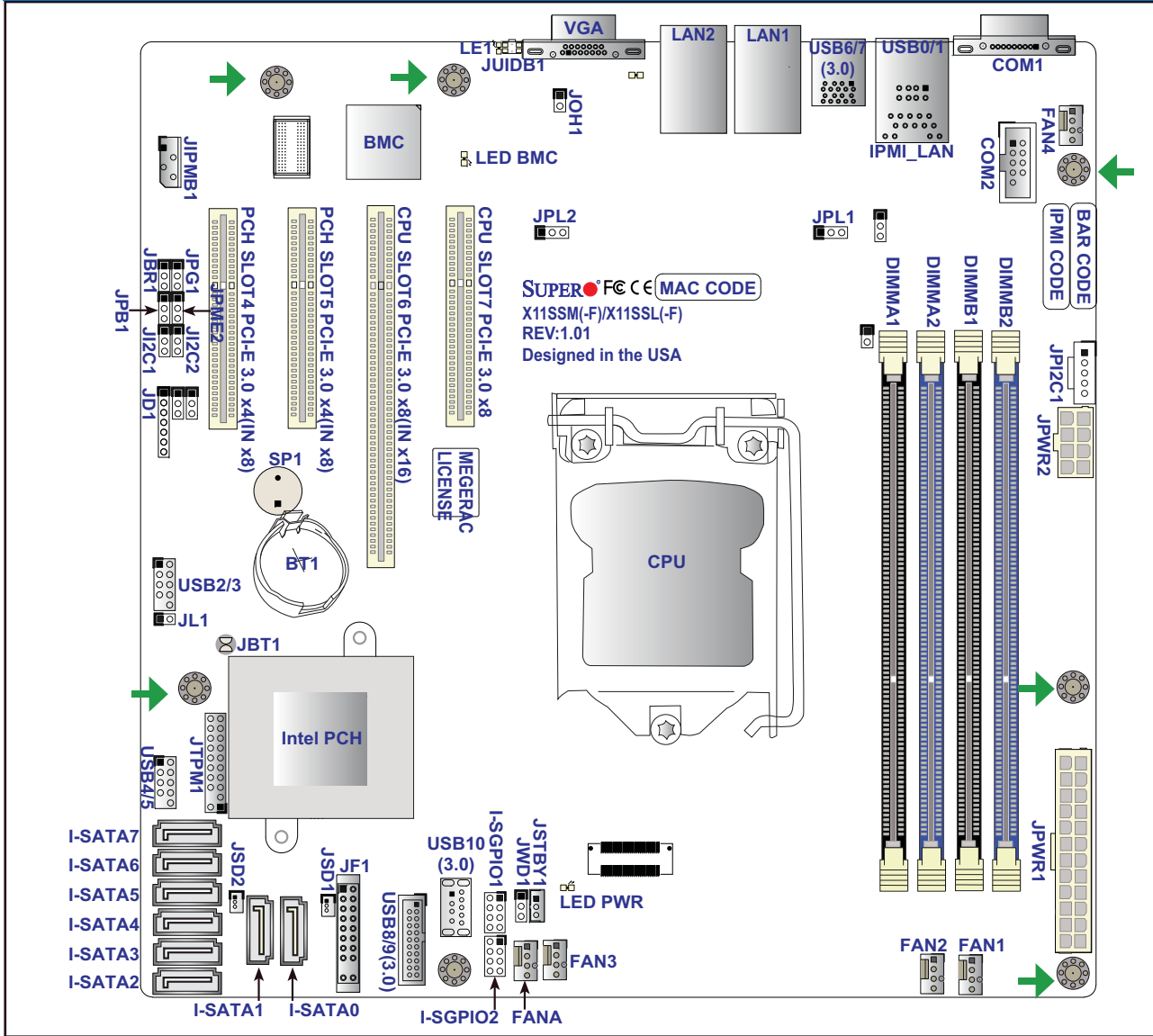
FOR YOUR SYSTEM TO WORK PROPERLY, PLEASE DOWNLOAD APPROPRIATE

- DRIVERS/IMAGES/USER'S MANUAL FROM THE LINKS BELOW:**
- Manuals: <http://www.supermicro.com/support/manuals>
 - Drivers & Utilities: ftp://ftp.supermicro.com/CDR_Images/CDR-X11-UP/
 - Safety: http://www.supermicro.com/about/policies/safety_information.cfm

PACKAGE CONTENTS

- One (1) Supermicro Motherboard
- Six (6) SATA Cables
- One (1) I/O Shield
- One (1) Quick Reference Guide

Motherboard Layout and Features



Jumpers and Connectors

Jumpers		
Jumper	Description	Default
JBR1	BIOS Recovery	Pins 1-2 (Normal)
JBT1	Clear CMOS	See Chapter 2
JPC1/JPC2	SMB to PCI Slots	Pins 1-2 (Enabled)
JPB1	BMC Enable/Disable	Pins 1-2 (Enabled)
JPG1	VGA Enable	Pins 1-2 (Enabled)
JPL1/JPL2	LAN1/LAN2 Enable	Pins 1-2 (Enabled)
JPME2	Manufacturing Mode Select	Pins 1-2 (Normal)
JWD1	Watch Dog Enable	Pins 1-2 (Reset)

Connectors	
Connector	Description
BT1	Onboard Battery
COM1	COM1 Port Header
COM2	COM2 Port Header [X11SSM(-F) only]
Fan1-Fan4, FanA	System/CPU Fan Headers
IPMI_LAN	IPMI_Dedicated Gigabit (RJ45) Port (X11SSM-F & X11SSL-F only)
I-SATA0-I-SATA5	(Intel PCH) Serial ATA (SATA) 3.0 Ports
I-SATA6 & I-SATA7	(Intel PCH) Serial ATA (SATA) 3.0 Ports [X11SSM(-F) only]
I-SGPIO 1/2	Serial_Link General Purpose I/O Connection Headers 1/2
JD1	Speaker/Power LED Indicator
JF1	Front Panel Control Header
JIPMB1	4-pin External BMC I ² C Header (for an IPMI Card)
JL1	Chassis Intrusion Header
JPC1	Power System Management Bus (Power SMB)
JOH1	Overheat LED Indicator
JPWR1	24-pin ATX Main Power Connector (Required)
JPWR2	+12V 8-pin Power Connector (Required)
JSD1/JSD2	SATA DOM (Device_On_Module) Power Connectors
JSTBY1	Inject External P5V_STBY Power
JTPM1	Trusted Platform Module/Port 80 Connector
JUIDB1	Unit Identifier Switch
LAN1/LAN2	Gigabit (RJ45) Ports (LAN1/2)
PCI-E (PCH) Slot 4	PCI-Express 3.0 x4in x8 Slot [X11SSM(-F) only]
PCI-E (PCH) Slot 5	PCI-Express 3.0 x4in x8 Slot
PCI-E (CPU) Slot 6	PCI-Express 3.0 x8in x16 Slot
PCI-E (CPU) Slot 7	PCI-Express 3.0 x8 Slot
SP1	Internal Speaker/Buzzer
USB 0/1	Back Panel USB 2.0 Ports
USB 2/3	Front Accessible USB 2.0 Headers
USB 4/5	Front Accessible USB 2.0 Headers
USB 6/7	Back Panel USB 3.0 Ports
USB 8/9	Front Accessible USB 3.0 Header
USB 10	USB 3.0 Type-A Header
VGA	Back Panel VGA Port

LED Indicators

LED Indicators			
LED	Description	Color/State	Status
LE1	Rear UID LED	Blue: On	Unit Identified
LEDBMC	BMC Heartbeat LED	Green: Blinking	BMC Normal
LEDPWR	Onboard Power LED	Green: Solid on	Power On

Memory Support

The X11SSM(-F)_X11SSL(-F) has four (4) 288-pin DIMM slots that support up to 64GB of SDRAM 72-bit DDR4 unbuffered ECC 2133/1866/1600/1333MHz memory.

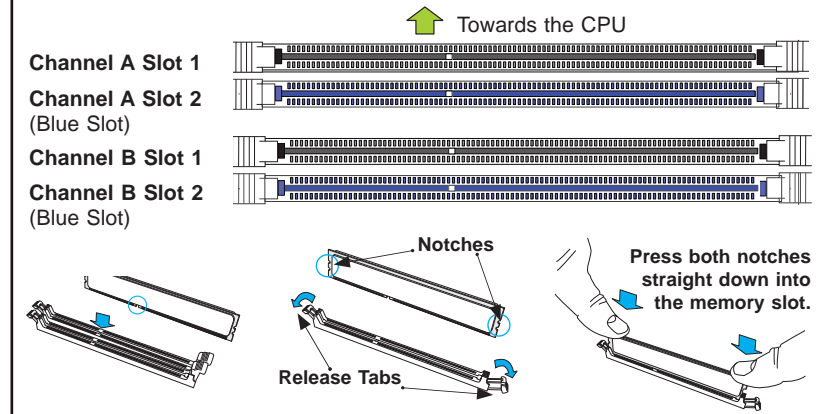
DIMM Memory Installation

Memory Population Guidelines

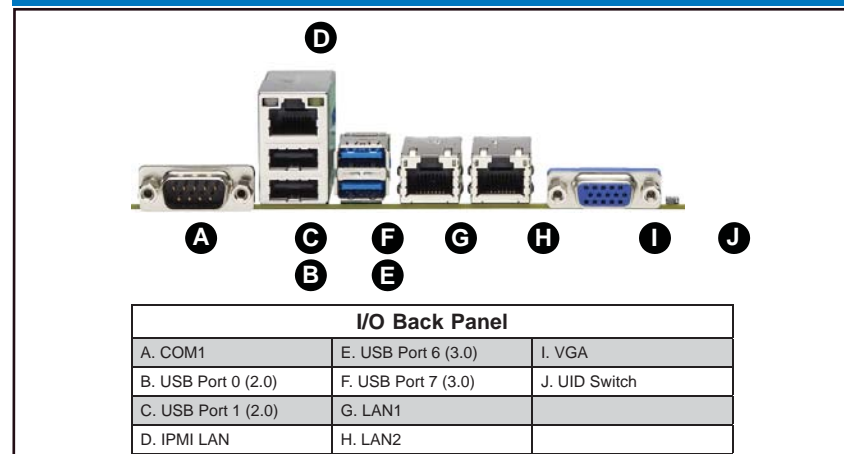
Please follow the table below when populating the X11SSM(-F)_X11SSL(-F):

Memory Module Population						
DIMM Slots per Channel	DIMM Type	POR Speeds (MHz)	Ranks per DIMM	Layer Count	FW Base	Supported Voltage
2	Unbuffered DDR4 ECC	2133, 1866, 1600, 1333	SR, DR	6	SPS	1.2V ¹

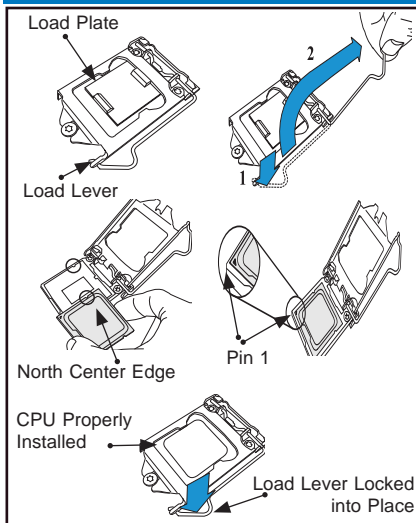
Insert the desired number of DIMMs into the memory slots. The DIMM slots should be populated in the following order: DIMMB2, DIMMA2, DIMMB1, DIMMA1. For the system to work properly, please use memory modules of the same type and speed in the motherboard.



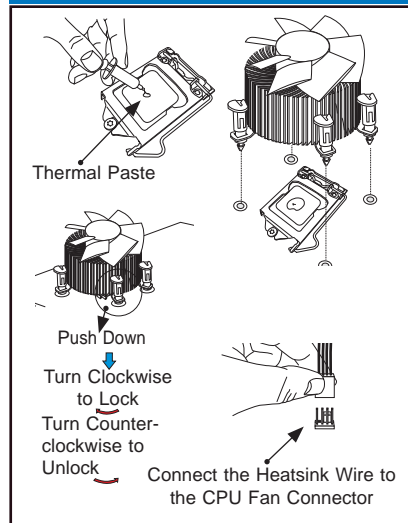
Back Panel I/O Connectors



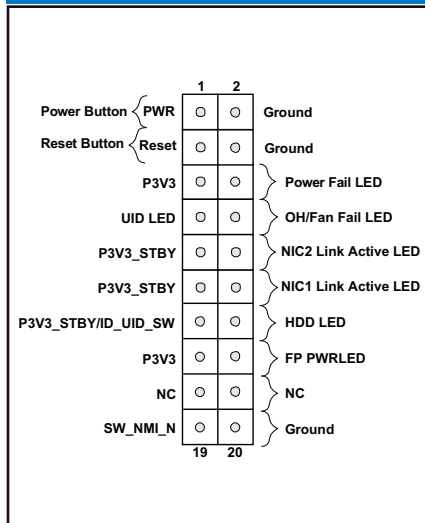
CPU Installation



Heatsink Installation



Front Panel Control (JF1)



Note: Graphics shown in this quick reference guide are for illustration only. Your components may or may not look exactly the same as drawings shown in this guide.

Note: Refer to Chapter 1 of the User Manual for detailed information on jumpers, connectors, and LED indicators.

Note: Refer to Chapter 2 of the User Manual for detailed information on memory support and CPU/motherboard installation instructions.